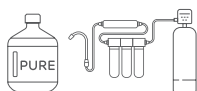


# 6 Quick Things to Note

## Use only distilled water.

Do you know filtered water is NOT distilled water.



### Distilled water

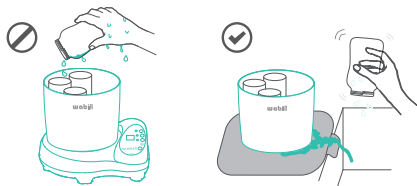
Store brought pure, distilled water, whole house filtration with water softener or R/O system.



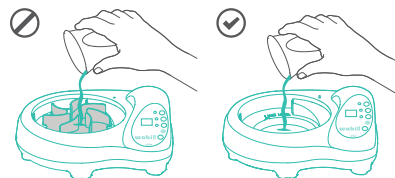
### NOT Distilled water

Fridge filtered water, bottle water, countertop filter, tap water, instant cold/hot water.

## Use a draining mat.



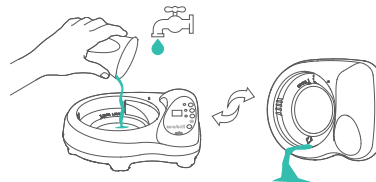
## Don't pour on top of the air rotor.



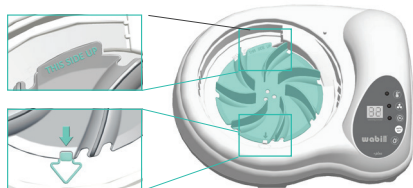
## Don't skip detergent.



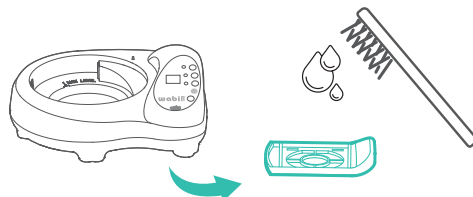
## Multiple fresh water rinse after descaling



## Lock the Air Rotor in correct position



## Clean the Air Filter monthly



## THANK YOU FOR CHOOSING WABI™

The WABI™ sanitizer & dryer is designed to meet the modern day parents' needs to provide a safe, healthy and convenient choice for your baby. With revolutionary sanitizing and drying features all built into one unit, it allows you to easily sanitize and dry bottles with the press of a button. The WABI™ sanitizer & dryer is made of 100% BPA-free material to ensure a nontoxic environment for your baby's daily use of feeding items. The design of the WABI™ sanitizer & dryer requires minimal countertop space and can hold an industry-leading capacity of 8 tall bottles, nipples, caps and feeding items. We are here to provide you less time cleaning and more time with your family. Enjoy!

# ELECTRIC STEAM SANITIZER & DRYER *PLUS*

## Instruction Manual

---

WA-8810N  
WA-8811N



# FAQ

## Why did we rename the product from Sterilizer to Sanitizer?

Wabi Baby has always been proud of our innovations in this product category. We were the first to have the drying equipped function, and we are the first to have an Ultraviolet version available through major retail stores. We heavily invest in craftsmanship and technologies, for which we have 3rd party laboratories, test to ensure that our quality and effectiveness meets the highest possible standards; therefore we believe our product can help many people outside of the retail consumer market. More advance usage means more compliances and regulations are needed. Although there hasn't been regulations established for this product category, Wabi Baby has decided to be the pioneer in this product category and take the initiative in order to be ready to comply with the US government agencies.

Under US FDA & EPA, the terms, sterilizer and sanitizer, are interpreted for products not in our category. One thing we know for sure is that the term, sanitizer, means NO LOWER than 99.99% of the organisms removed and the term, sterilizer, removes 100% of all the organisms. Currently, there are no regulated terms for consumer use devices, so there are a lot of products using the term, sterilizers, on the market.

Wabi Baby always thrives to meet the highest possible standards. Additionally, with our new products in categories that are regulated with the FDA and EPA, we feel it is appropriate to follow the regulation they use for chemical disinfectants on all of our products. Our 3rd party antimicrobial lab test reports support the 99.99% or greater result, therefore we feel it is appropriate for us to use the term, Sanitizer.

## So, does it mean Wabi Baby Sanitizers are not as effective as other products that are called "sterilizers?"

The term, sterilizer, is not regulated for this product category, so you will see this term used on many devices on the market. In fact, products like the FDA regulated medical grade breast pumps and nebulizers; the term, sanitizing, is used in most product care sections instead of sterilizing.

Due to the strong support of our customers from communities such as breast milk donors, breast milk testing labs, cystic fibrosis moms, cystic fibrosis clinics and doctors, we have done more 3rd party lab tests on our products to ensure the optimal sanitation for specific organisms. Although we cannot comment on other products using the term sterilizer, we can confidently say our products meet and exceed the sanitation effectiveness of its intended use and we will continue to push for even higher standards.

# CONTENTS

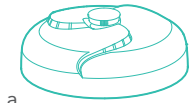
safeguards.....	2
what comes in the box.....	3
avoid common user errors .....	4
before first use .....	5
let's get started .....	6
operation guide .....	7
base care.....	8
descaling.....	9
troubleshooting + faq .....	10
warranty .....	11

## SAFEGUARDS

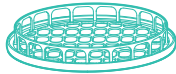
When using electrical appliances, basic safety precautions should always be followed including the following:

- Not for space heating purpose.
- To protect against electrical shock DO NOT IMMERSER cord or plug or sanitizer base in water or other liquid when cleaning.
- DO NOT place sanitizer and its cord beside or near damp or hot areas, electric burner or in a heated oven especially while in use.
- Do not use outdoors.
- Always use on a level heat-resistant surface.
- When in use, the electric sanitizer contains hot water and steam.
- Extreme caution must be used when moving an appliance containing hot oil or other hot liquids.
- Do not touch hot surfaces. Use handles and knobs.
- Always keep the electric sanitizer and its plug out of reach of small children.
- Ensure that the power supply voltage marked on the appliance corresponds with your main supply.
- To disconnect, turn any control cycle "off", then remove plug from wall outlet.
- Ensure water has been added to the base unit before switching the unit on.
- Always start with 80ml of distilled water for sanitizing. Sanitation cycle will not function without water.
- Always unplug from the electric outlet when not in use. Allow to cool before putting on or taking off any parts.
- Close supervision is necessary when any appliance is used near children.
- Do not operate any appliance with a damaged cord or plug or after the appliance malfunctions or has been damaged in any manner. Return appliance to the nearest authorized service facility for examination, repair, or adjustment.
- The use of accessory attachments is not recommended as this may cause injuries.
- This sanitizer is intended to be used in a household environment such as:
  - a. staff kitchen areas in shops, offices and other working environments.
  - b. farm houses.
  - c. by clients in hotels, motels and other residential type of environments.
  - d. bed and breakfast.
- This appliance is not intended for use by individuals (including children) with reduced physical, sensory or mental capabilities, or lack of experience and knowledge, unless they are supervised or have been instructed on how to use the appliance by a person responsible for their safety.
- Do not open while in use as this product contains boiling water. Beware of steam escaping from the vent holes in the lid.
- Allow at least a 30-minute interval between two operations and make sure the unit has cooled down before pressing the start button for sequential use.
- Steam from the unit can cause burns. Always allow 5 minutes to cool down after the cycle finishes before lifting the lid.
- KEEP CHILDREN AWAY from this sanitizer at all times.
- NEVER place the power cord on top of the heating plate on the base unit.
- DO NOT place any cloth on the cover while in use, or it may hinder the steam from venting properly.
- User maintenance other than cleaning or descaling is not required for this product.
- DO NOT attempt to dismantle or repair the sanitizer unless done by a qualified person or an authorized service agent. Damaged supply cord or parts must be replaced by the manufacturer or authorized service agent to prevent any injuries and hazards.
- A short power supply cord is provided to reduce any risks resulting from becoming entangled in or tripping over a longer cord.
- Extension cords may be used if care is exercised in their use.
- If an extension cord is used:
  - a. The marked electrical rating of the extension cord should be at least equal to the electrical rating of the appliance.
  - b. The extension cord should be a grounding type 3-wire cord.
  - c. The longer cord should be arranged so that it will not drape over the countertop or tabletop where it can be tripped over, snagged, or pulled on unintentionally (especially by children).
- To provide continued protection against risk of electric shock, connect to properly grounded outlets only.
- CAUTION: Risk of electric shock; disconnect from outlet before servicing.
- Do not sanitize very small parts which can fall through the opening in the bottom of the chamber which may cause damage to the heating plate and cause the small parts to melt in the heating plate.
- Use only distilled water or pure water to sanitize. Never use any additives.
- Do not use for purposes other than those outlined in this user guide.
- SAVE THESE INSTRUCTIONS.

## WHAT'S IN THE BOX



a.



b.



c.



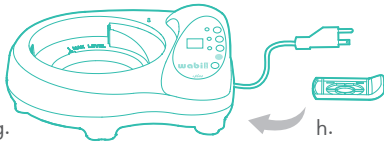
d.



e.



f.



g.

h.



i.

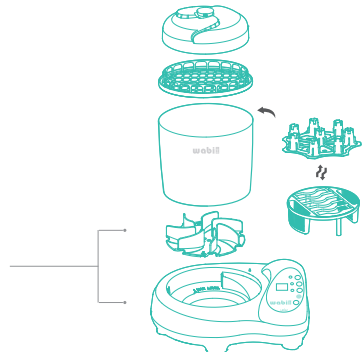
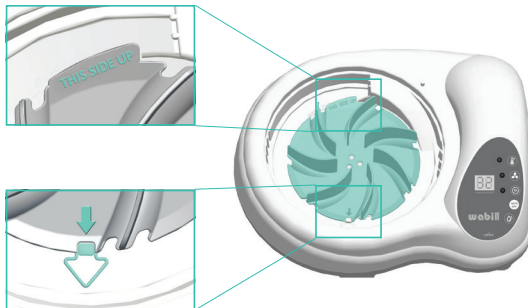


j.

- a. lid
- b. accessory basket
- c. chamber
- d. bottle rack
- e. plate rack
- f. air rotor
- g. base unit
- h. filter
- i. tongs
- j. measuring cup

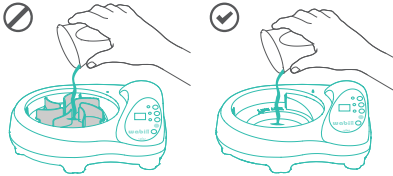
Electrical Requirements:  
**120V, 60 Hz**

## ASSEMBLY ORDER



## PREVENTING COMMON USER ERRORS

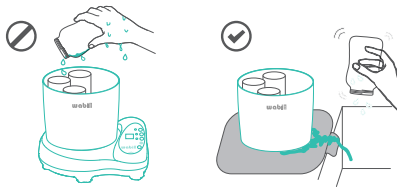
These are the some of the most common user errors that can cause leaks & issues, and potentially lead to permanent damage.



### Do NOT pour water on top of the air rotor

Prevents the water from being wrongfully directed into the air vent.

Allows frequent inspection on the heating plate conditions.

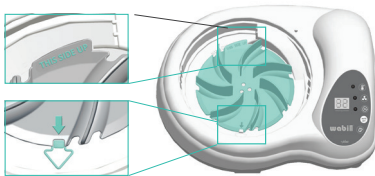


### Use a draining mat

Allows the excess water to drain.

Prevent additional water from being added.

Prevent tap water being added to the heating plate.



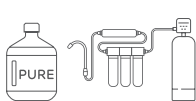
### Always lock the air rotor in the position

Avoid water being misdirected in to the vent.

Promotes efficient air flow.

## FILTERED WATER IS NOT DISTILLED WATER

Filtered water is often confused with distilled water.



### Distilled water

Store brought pure, distilled water, whole house filtration with water softener or R/O system.



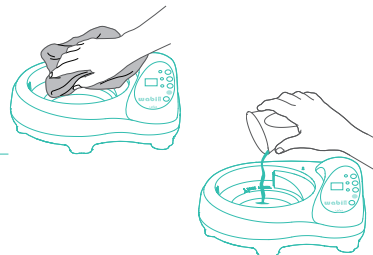
### NOT Distilled water

Fridge filtered water, bottle water, countertop filter, tap water, instant cold/hot filter.



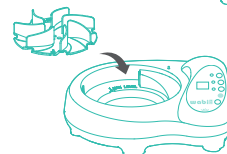
- 1** Clean the parts
- View page X on proper parts cleaning and maintenance.

**▲** WARNING: Never immerse the Electric Base Unit in water.

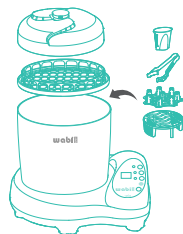



- 2** Pour Water
- Use the included Measuring Cup to pour 80 ml of distilled water onto the Heating Plate.

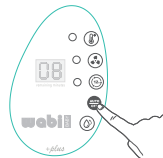
- 3** Place Air Rotor
- Place the Air Rotor on top of the Heating Plate, making sure it is locked in place.



- 4** Set the Chamber
- Place the Chamber on the Electric Base Unit, place the Accessory Tray on top of the Chamber, then close the Lid.



- 5** Initial Sanitization
- Press the sanitization  button on the Control Panel. When the sanitize cycle is finished, the unit will beep 3 times. Let the unit cool for 10 minutes before next use.



## PREPARING FOR SANITIZING

All items intended for sanitizing must be thoroughly washed clean with soapy water, completely rinsed with fresh water, and thoroughly drained.

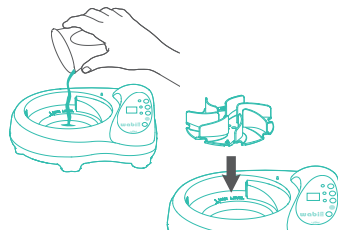
- !** IMPORTANT: All items to be sanitized must be able to withstand boiling temperatures (100° C or 212° F) in order to be used with this unit. Please consult your feeding gear's user guide to ensure it can be sanitized by steam as some items may melt in high temperatures.

- ▲** WARNING: Do not sanitize items that are filled with liquid, such as a teether with fluid inside.



## LET'S GET STARTED

- 1** Pour water onto Heating Plate
- Use the included Measuring Cup to pour 80ml of distilled water onto the Heating Plate.
  - Place the Air Rotor on top of the Heating Plate, making sure it is locked in position correctly.
- !** IMPORTANT: 80ml is the proven effective amount to kill 99.9% of bacteria when use as directed. In any case where you feel prolonging sanitation is necessary, you may add up to but never exceed 100ml of water.



- 2** Load items into the Chamber
- Choose the appropriate Rack and place it inside the Chamber. Remember to allow good airflow between them.

**TIP:** Place the Chamber on a draining mat before loading the objects.

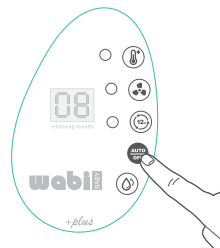
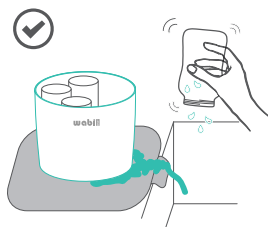
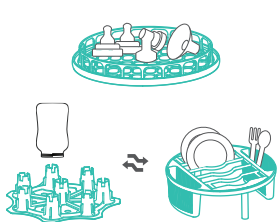
#### Bottle Rack:

Make sure that bottles are placed upside down, and load each one onto a rack post. Place bottle nipples and components on the Accessory Tray.

**TIP:** Most bottles have a concave area on the bottom. Try to shake off any excess water that may have accumulated in the indentations. Excess water may extend the drying time and prevent the contents from drying completely, so be sure to drain out as much water as possible.

#### Plate Rack:

Load larger items on the Rack and long, thin items in the utensil holder. Place items with their larger open ends facing down to keep water from collecting, and make sure to allow enough space for good airflow.



### 3 Choose an operation mode

- Select an operation mode.
- When the cycle is finished, the unit will beep 3 times and shut off automatically.
- Allow the unit to cool for 10 minutes before opening the Lid. Be careful to avoid any residual steam.
- Use the included Tongs to remove the sanitized items. Handle with care as the item may still be hot.



- ☑ Indication for operation
- 🕒 Countdown display
- 🔊 Alert for cycle completion



**SANITIZE ONLY** Uses steam to kill 99.9% of harmful household germs.

**Setting:** Built-in sensor with auto-shut off, generally runs about 8-14 min. with 80 ml of water. Steam time varies from the amount of water put in, surrounding environment temperature and humidity.

- ☑ Light: on
- 🕒 Countdown: estimated
- 🔊 Alert: 3 beeps



**DRY ONLY** Fast drying to prevent bacteria growing.

**Setting:** Press repeatedly to select drying time - 10 / 35 / 45 / 60 minutes.  
**Memory:** it remembers your last setting for future use.

- ☑ Light: on
- 🕒 Countdown
- 🔊 Alert: 3 beeps



**STORAGE MODE** Auto activates the drying intermittently.

**Setting:** Use in conjunction with AUTO mode. Turns on drying for 10min automatically every 4 hours for total of 3 cycles. Setting can be changed any time before AUTO cycle ends.  
**Memory:** it remembers your last storage setting for future use.

- ☑ Light: on



**AUTO** One button sanitize + drying

**Setting:** Press repeatedly to select drying time - 10 / 35 / 45 / 60 minutes.  
**Memory:** it remembers your last drying & storage setting for future use.

- ☑ Light: on
- 🕒 Countdown: estimated

**OFF** Press to cancel any operation



**DESCALING** Easy heating plate cleaning

**Setting:** 35min cycle consist of 5 min. of heating and 30 min. of cooling down.

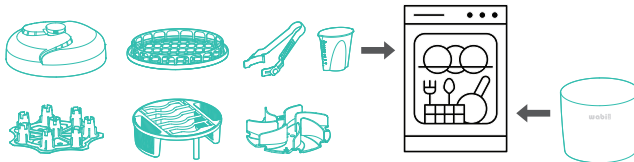
- 🕒 Countdown
- 🔊 Alert: 3 beeps

## BASIC CARE

## HOW TO CLEAN

By performing regular maintenance on your WABI BABY™ sanitizer, you will prolong the life of the unit and ensure that it continues to operate at maximum efficiency.

- Top rack dishwasher safe  
Lid, Accessory Basket, Bottle Rack,  
Plate Rack, Air Rotor, Tongs, Measuring Cup
- Dishwasher safe  
Chamber

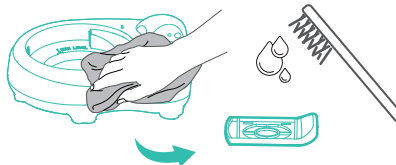


## CLEANING THE ELECTRIC BASE UNIT

Just like all appliances with water heating elements, calcium deposits or scale may build up after the water evaporates. Scale is non-toxic, but if left unattended, can hinder appliances' performance. Descaling your Wabi Baby sanitizer on regularly helps maintain and extend the life time of the heating element. Depending on the mineral content of your water, calcium deposits may build up faster, making it necessary to descale more often, therefore we always recommend using distilled water to slow down the scale buildup.

**Electric Base Unit**

- Surface: Wipe with a damp cloth.
- Air Filter: Brush off the dust to maintain drying efficiency.
- Heating Plate: Descaling using one of the following methods  
Descaling Mode: use 100% food grade citric acid.  
Manual Mode: Use White vinegar.



⚠ **WARNING:** Never immerse the Electric Base Unit in water. Never use harsh abrasives or cleaning agents (such as bleach) or a scouring pad on the unit.

## CITRIC ACID

Use only 100% food grade citric acid in powder form. One teaspoon of citric acid would be a good starting amount for weekly descaling. Please mix according to the manufacturer's instructions, and adjust the amount according to your situation.



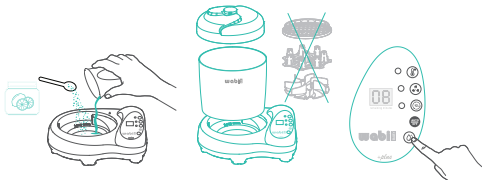
Where to buy 100% Food grade citric acid?

- Wabibaby.com - Wabi Baby Descaling Powder, Genuine Wabi Baby Product.
- Grocery store canning section, under the name "sour salt" in the kosher section.
- Spice aisle, home brewing supplier, and natural food store.

## CHOOSE ONE OF THE DESCALING METHOD

**Using Descaling mode** (plus models only)  
Use with food-grade citric acid only.

1. Pour distilled water onto the Heating Plate, enough cover the entire heating plate rim, but do not exceed the maximum level.
2. Add 1 teaspoon of citric acid powder to the water.
3. Place the Chamber on the Electric Base Unit, then close the Lid. No other parts are not needed.
4. Press Descaling button . When the cycle is finished, the unit will beep 3 times.

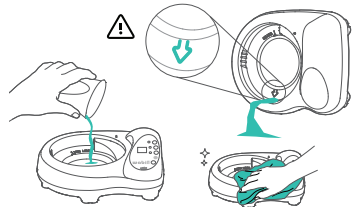


**⚠ WARNING:** DO NOT leave either the citric acid or vinegar solution on the heating plate for more than 2 hours each time, the acidic ingredient the polish stainless steel may become dull due to over exposure to strong acidic ingredient.

## FRESH WATER RINSE

Removal of any remaining acidic cleaning is very critical, prolong exposure to these acidic ingredient may cause pitting, rusting or dullness to the heating plate.

1. Pour out the cleaning solution to the direction of the arrow on the Base Unit, then fill the Heating Plate with clean water, again.
2. Repeat the step 1 & 2 three times, then step 1, for one last time. Make sure there is no more remaining cleaning solutions.
3. Wipe the entire Base Unit with a clean damp towel on the body and heating plate once again, the dry with a clean towel.
4. The sterilizer is now ready for regular use.

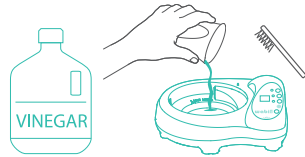


**ⓘ IMPORTANT:** Only pour the liquid out in the same direction as the arrow on the Base Unit. There are many air vent openings on the Base Unit, pouring out from the wrong direction will cause permanent damage to the circuit board inside the Electric Base Unit and is not covered by the warranty.

**Unplugged Descaling with Vinegar or citric acid**

This descaling method does not use descaling mode.

1. Unplug the unit.
2. Pour white vinegar onto the Heating Plate, enough cover the entire heating plate rim, but do not exceed the maximum level.
3. Leave the solution in the Heating Plate for an hour only.
4. A dedicated soft toothbrush may be used to clean stubborn buildup on the Heating Plate.
5. Repeat steps 2-5 if necessary.



## TROUBLE SHOOTING GUIDE

Indicator Light not lighting	<p>a. No power; check circuit breaker or GFCI breaker.</p> <p>b. Incorrect plug voltage.</p> <p>Solution: Please make sure the power cord is plugged in. This unit is certified to be used within 120V 60Hz in North America; if you are in a country using a different voltage, please be sure to use the proper transformer. Due to the varying quality of transformers available on the market, please understand that we do not warranty our product for use with a transformer.</p>
Beeping sound	<p>a. Bottle Chamber placed incorrectly.</p> <p>b. No water or not enough water was added to the Heating Plate. Please make sure to add 80 ml of distilled water before selecting your desired mode.</p>
Indicator Light flashing	<p>a. Bottle Chamber placed incorrectly.</p>
LED flashing "Lo"	<p>a. No water was added to the Heating Plate. Please make sure to add 80 ml of distilled water before selecting your desired mode.</p> <p>b. Not enough water was added—sanitation may not complete. Please make sure to add 80 ml of distilled water and start the cycle again.</p>

## FAQ

Why are the contents still wet after drying?	<p>a. Try to set for longer drying time.</p> <p>b. Improper placement of the contents may prevent the hot air from circulating evenly.</p> <p>c. Water may be accumulating in the concave bottoms of bottles; shake the water off before placing them in the Chamber.</p> <p>f. Air Filter may need to be cleaned. See page 8.</p>
What is that dark green sticky residue after descaling?	<p>This is the burnt citric acid, customer most likely accidentally operated the steam cycle, and burnt the citric acid. Just do one more round of descaling, this should remove the residues.</p>
Why do I detect an electrical burning smell?	<p>Possible water damage to the Electric Base Unit from water flowing into the circuit board through the air vents. Stop using the unit immediately and contact our Customer Service.</p>
Why are there odor or white spots on the Heating Plate, Lid, Chamber, Racks, or Accessory Tray?	<p>This may be an indication that the Heating Plate needs descaling. Scale buildup is normal and occurs more quickly in hard water areas. See page 9 for descaling.</p>
Why does sanitation sometimes take so long or so short?	<p>You may have poured too much water onto the Heating Plate or left too much water on the contents after rinsing. Try shaking off as much residual water as possible. For shorter cycle, you may not have poured enough water onto the Heating Plate. Be sure to use 80ml.</p>
Why does water leak out of the sanitizer?	<p>a. You may have poured too much water onto the Heating Plate or misdirected the water into the air vent. See page 4.</p>
Why does the unit trip the circuit breaker?	<p>This is an indication of an overloaded circuit. Unplug all other appliances on the same circuit or try the unit on a separate electrical circuit without other appliances.</p>

## WARRANTY

When we use the terms “we,” “us,” and “our,” we are referring to the Company, and when we use the terms “you” and “your,” we mean the original end-user consumer.

We do not authorize anyone, including, but not limited to, Retailers, the subsequent consumer purchaser of the product from a Retailer, or remote purchasers, to obligate us in any way beyond the terms set forth herein. We warrant our products to be free from substantial defects in workmanship and materials under normal household use in accordance with the instructions for one (1) year following the date of purchase. We will, at our discretion, replace or repair any item requiring service. This warranty shall not apply to damage arising from neglect, accidental damage, or commercial use of the product. This is a limited warranty which extends only to consumers and does not extend to Retailers. Liability for consequential damages is expressly excluded. Proof of purchase is required.

### Replacement/Credit

If our product fails to meet our limited warranty during the warranty period, we will, at our option, replace the product free of charge or provide you with a replacement of comparable value. Any replacement may be conditioned upon the return of the defective product to us at your expense.

### What Our Limited Warranty Does Not Cover

This warranty is effective only if the product is operated in the country in which it was purchased. A product that requires modifications or adaptation to enable it to operate in any other country than the country for which it was designed, manufactured, approved and/or authorized, or repair of products damaged by these modifications, is not covered under this warranty. We offer this limited warranty only when the product is used by the original end-user consumer. We offer no other warranty. Additionally, while our warranty is excellent, there are other limits to it. We offer NO WARRANTY in cases of damage in transit, inadequate care or neglect, abuse, abnormal use, accidents, normal wear and tear, damage due to environmental or natural elements, failure to follow product instructions, immersion in water. Water damage to the base unit due to misuse, improper installation, improper storage or maintenance of the product or improper service, or causes not arising out of defects in materials and workmanship.

### Disclaimer of Other Warranties

The Express Warranties in the preceding section are exclusive and in lieu of all other warranties. However, to the extent applicable law does not permit disclaimers of certain implied warranties, such warranties are limited to the warranty period identified above. Some states and countries do not allow limitations on how long an implied warranty lasts, so the above limitations may not apply to you.

### Limitation on Damages

In no event shall we be liable for incidental, compensatory, punitive, consequential, indirect, special, or other damages. Our aggregate liability with respect to a defective product is limited to the monies paid to us.

### State Variations

This warranty gives you specific legal rights and you may also have other rights, which vary depending on the state, province, or country.

## CUSTOMER SUPPORT

For assistance, please contact us directly or visit [www.wabibaby.com/support](http://www.wabibaby.com/support) for our complete FAQ plus the latest updates to the user manual.

To obtain warranty service product, please visit contact page at [wabibaby.com](http://wabibaby.com).

Customer Support

Business hours: 9am–5pm CST | Monday–Friday

**wabi**<sup>™</sup>

© Copyright 2012 Wowkido, Inc. All rights reserved.

The Wabi<sup>™</sup> and Wabi Baby<sup>®</sup> are trademark and registered owned by Wowkido, Inc.

Latest Update: May. 2018 - v6.1